



## Hanover Gate Mansions

Park Road, Regents Park, NW1 4SN

£1,000 Per Week

\*\* AS per Building Management - Students may be considered provided they are studying at LONDON BUSINESS SCHOOL \*\*

This is a well proportioned three bedroom raised ground floor apartment located in a much sought after residential mansion building directly opposite Regent's Park and close to London Business School. This fine flat comprises of:- Entrance hallway with plenty of storage, spacious reception room, separate kitchen, three bedrooms (master with en-suite), second family bathroom/WC.

The flat also benefits from having high ceilings, wooden flooring, secure entry phone and caretaker, within 10 mins walk to Baker Street Underground station; with ample bus routes along Park Road and Gloucester Place. Also the world renowned Regent Park and Lord's cricket ground are just a short stroll away.

The property is offered furnished and is available NOW for long let. \*\* Please NOTE there is a NO PET policy applicable \*\*.

- Three Bedrooms
- Two Bathrooms
- Raised Ground Floor
- Porter
- Close to the Park

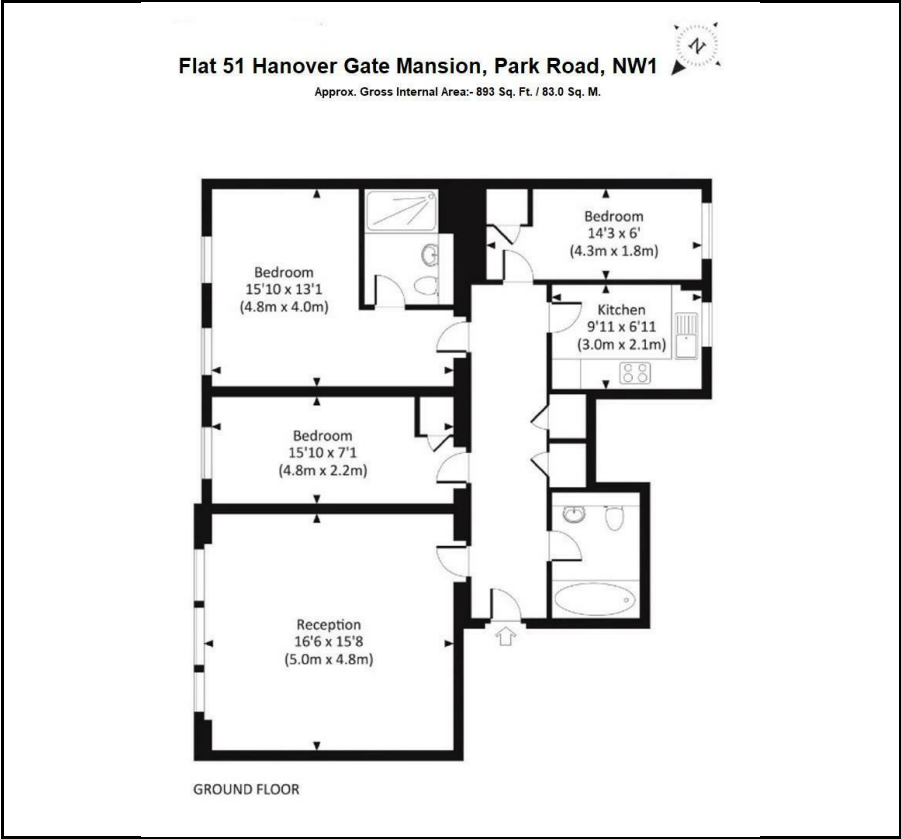
### Viewing

Please contact our Messila Residential Office on 020 7586 6699 if you wish to arrange a viewing appointment for this property or require further information.

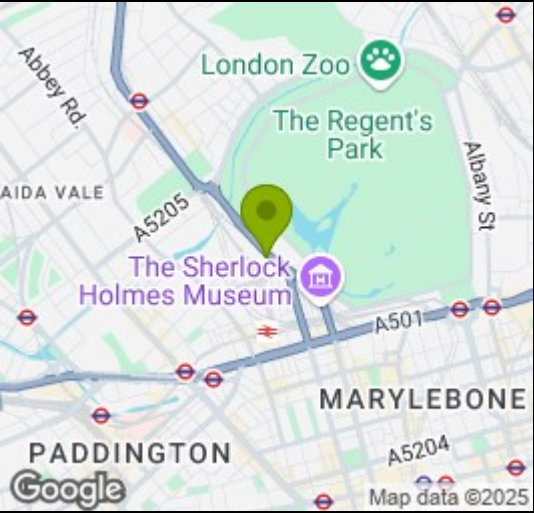




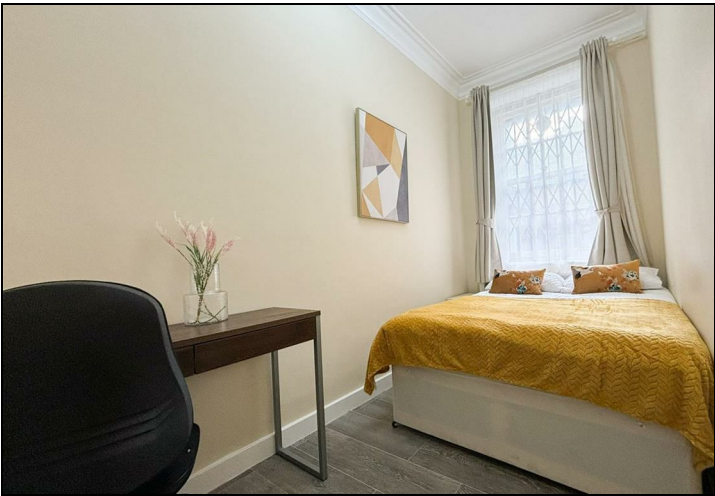
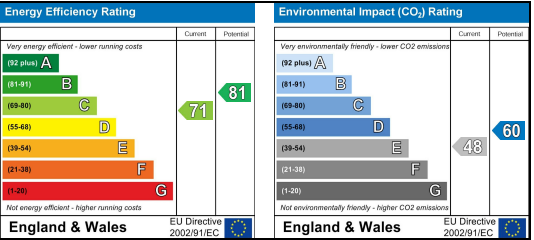
Floor Plan



Area Map



Energy Efficiency Graph



These particulars, whilst believed to be accurate are set out as a general outline only for guidance and do not constitute any part of an offer or contract. Intending purchasers should not rely on them as statements of representation of fact, but must satisfy themselves by inspection or otherwise as to their accuracy. No person in this firms employment has the authority to make or give any representation or warranty in respect of the property.